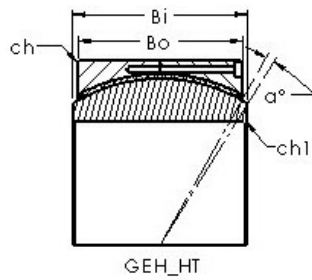
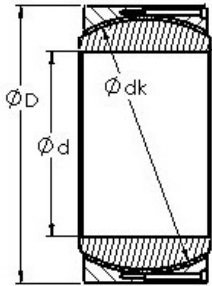




BEARING de Mexico?S.A.



AST GEC600HT Simple bearings

Bearing No. GEC600HT

Bore Diameter	600 mm
Outer Diameter	800 mm
Bearing Type - circumferential split	wide
Bore Dia (d)	600.0000
Outer Dia (D)	800.0000
Outer Width (Bo)	230.0000
Inner Width (Bi)	272.0000
Dynamic Load Rating (Cr)	28,980,000
Static Load Rating (Cor)	57,960,000
Max. shaft corner radius, or 45 deg. chamfer (ch1)	2.000
Max. housing corner radius, or 45 deg. chamfer (ch)	5.000
Spherical Diameter (dk or Dk)	700.000
Mis-alignment Angle (α deg.)	3
Weight (g)	413,000.00
Material	Outer ring made from carbon steel, inner ring is made from 52100 chrome steel, or equivalent

GEC600HT Bearing 2D drawings and 3D CAD models