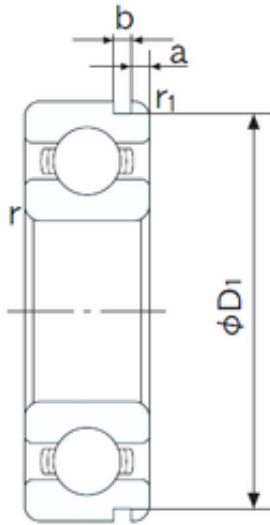




BEARING de Mexico?S.A.



100 mm x 150 mm x 24 mm NACHI 6020N
Rigid ball bearings

Bearing No. 6020N

Size	100x150x24 mm
Bore Diameter	100 mm
Outer Diameter	150 mm
Width	24 mm
d	100 mm
D	150 mm
B	24 mm
C	24 mm
a	3.71 mm
b	3.1 mm
r min.	1.5 mm
r1 min.	0.5 mm
D1	145.24 mm
Weight	1.20 Kg
Basic dynamic load rating (C)	60 kN
Basic static load rating (C0)	54 kN
(Grease) Lubrication Speed	4200 r/min
Bore Type	Cylindrical Bore
Enclosure	Open
Configuration	Single Row
Bore Size	100 mm
Outside Diameter	150 mm
Width	24 mm
Fillet Radius/Chamfer	1.5 mm
r1	0.5 mm

6020N Bearing 2D drawings and 3D CAD models



BEARING de Mexico?S.A.

Groove Width	3.1 mm
Groove Diameter	145.2 mm
a (max)	3.7 mm
Dynamic Load Rating	60,000 N
Static Load Rating	54,000 N
Limiting Speed - Grease	4,300 rpm
Limiting Speed - Oil	5,300 rpm
Factor fo	15.9
Radial Clearance	0.012 to 0.036 mm
da (min)	107 mm
Da (max)	143 mm
Dx (min)	162 mm
ra (max)	1.5 mm
Cy (max)	6.1 mm