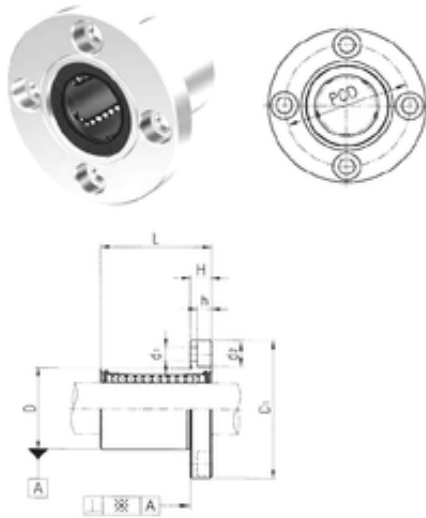




BEARING de Mexico?S.A.



LMF6 Bearing 2D drawings and 3D CAD models

Samick LMF6 Linear bearings

Bearing No. LMF6

Bore Diameter	6 mm
Outer Diameter	12 mm
d	6 mm
D	12 mm
d1	3,4 mm
d2	6,5 mm
h	3,3 mm
D1	28 mm
H	5 mm
L	19 mm
PCD	20 mm
Tolerance perpendicularity (C)	12
Weight	0,027 Kg
Basic dynamic load rating (C)	0,2 kN