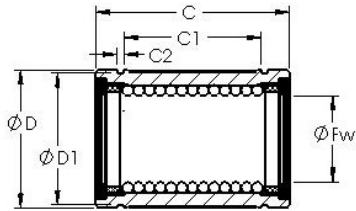


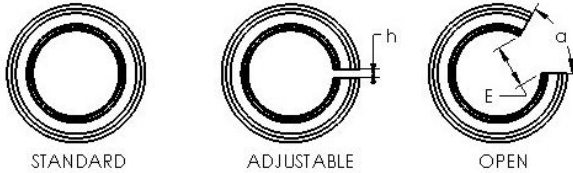


BEARING de Mexico?S.A.



AST LBE 30 Linear bearings

Bearing No. LBE 30



Bore Diameter	30 mm
Bearing Type	standard type
Dynamic Load Rating (Cr)	1,560
Static Load Rating (Cor)	3,060
Shaft Dia. (Fw)	30.000
Outside Dia. (D)	47.000
Length (C)	68.000
Groove-to-groove length (C1)	48.000
Groove Width (C2)	1.850
Groove Dia. (D1)	44.000
Weight (g)	305.00
Material	52100 chrome steel, or equivalent

LBE 30 Bearing 2D drawings and 3D CAD models