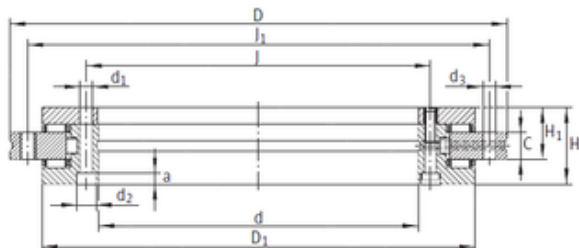




BEARING de Mexico?S.A.

INA RTC395 Complex bearings



Bearing No. RTC395

Size	395x525x20 mm
Bore Diameter	395 mm
Outer Diameter	525 mm
Width	20 mm
d	395 mm
D	525 mm
C	20 mm
H	65 mm
a	9,3 mm
d1	9,3 mm
d2	15 mm
d3	9,3 mm
D1	486 mm
H1	42,5 mm
J	415 mm
J1	505 mm
Weight	33 Kg
Dynamic load rating radial (C)	186 kN
Dynamic load rating axial (C)	300 kN
Static load rating radial (C0)	655 kN
Static load rating axial (C0)	2280 kN

RTC395 Bearing 2D drawings and 3D CAD models